

Attractions

1 Alresford Millennium and Alre Valley Trail

A favourite with many is the Alresford Millennium and Alre Valley Trail, a self-guided trail about a mile long which links together footpaths around the town, with illustrated boards introducing the history of Alresford, its inhabitants, railway line, wildlife and rural surrounds. Explore a little further and add on the optional loop known as the Alre Valley Trail.

Download the trail from visitwinchester.co.uk/brochures



2 Old Alresford Pond

In 1189 Godfrey de Lucy was consecrated Bishop of Winchester and it is he who is said to have devised a grand plan for improving the trade both of Winchester and Alresford by the construction of a "navigation" on the river Alre and Itchen. Old Alresford Pond is a large shallow lake that attracts significant numbers of wetland birds and is one of the best inland sites in Hampshire for migrant waders. The area is also known for its many watercress beds, which have long been of ornithological interest.



3 Great Weir

Henri de Blois, brother of King Stephen and Bishop of Winchester, is credited with the idea of building the Great Weir or dam and designing the T-shaped town of Novum Forum, soon to become New Alresford. He died before the completion of the project and Godfrey de Lucy, his successor as Bishop (1189-1204) finished Alresford's T-shaped town centre, as we see it today, still based upon the original burghage plots laid out by the developers.



4 St John's Parish Church

It has been the Parish Church of New Alresford since 1851. However, we know from the Domesday Book that there was a church in New Alresford soon after the Norman Conquest. Until 1851 it was part of the Parish of Old Alresford. St John's now forms part of the Arle Valley Benefice which is made up of the parishes of New Alresford, Ovington, Old Alresford and Bighton.



5 Historic Broad Street

A contender for the county's most beautiful street, tree-lined Broad Street combines a feast of Georgian colourwashed buildings with interesting shops and hostleries, still following Bishop de Lucy's medieval town plan.



For downloadable walking and cycling trails around Alresford visit newalresford-tc.gov.uk

Alresford Map



Map by Jonathan Chapman
Artist & Illustrator
illustrationbyjonathan.com
@JKChapmanArtist
@illustrationbyj

Discover the district with more trails – see visitwinchester.co.uk



Where to eat

- TIFFINS TEA ROOMS**
52 West Street | 01962 734 394
- THE GLOBE**
The Soke (off Broad Street) | 01962 733 118
- THE SHAPLA**
60 West Street | 01962 732 134
- THE BELL INN**
12 West Street | 01962 732 429
- THE SWAN HOTEL**
11 West Street | 01962 732 302
- CARACOLI**
15 Broad Street | 01962 738 730
- PULPO NEGRO**
28 Broad Street | 01962 732 262
- MANGE 2 DELI**
44-46 West Street | 01962 733 189
- NO. 32 BROAD STREET**
32 Broad Street
- THE SANDWICH SHOP**
51 West Street | 01962 807 551
- THE ARLEBURY CAFÉ**
Arlebury Park, The Avenue | 07597 716 797
- SHAH'S AROY THAI**
21 Broad Street | 01962 656 390
- COURTYARD TEA ROOMS**
19 Broad Street | 01962 733 303
- THE HORSE AND GROOM**
2 Broad Street | 01962 734 809
- COFFEE #1**
2-4 East Street | 01962 734 196
- HEIDI'S PATISSERIE**
13 West Street | 01962 736 795
- DAVE'S FISH AND CHIPS**
23 West Street | 01962 734 111
- PARTY AT THE MILL**
Station Mill, Station Rd | 07387 265 123
- WATERCRESS LINE WEST COUNTRY BUFFET**
The Watercress Line, The Railway Station | 01962 733 810
- THE CRICKETERS**
Jacklyns Lane | 01962 469 930
- HOBBY HORSE**
6-8 Broad Street | 01962 733 933



6 The Watercress Line

The Railway Station | Station Road
New Alresford | SO24 9JG | 01962 733 810

Let off steam and travel on a lovingly restored Steam trains through 10 miles of beautiful Hampshire countryside.

It's the perfect way to unwind and witness the sights, sounds, smells and magic of steam travel from a bygone age.

Look out for family events and dining trains throughout the year. watercressline.co.uk

Where to stay

THE SWAN HOTEL

11 West Street
swanhotelalresford.com

THE BELL INN

12 West Street
bellalresford.com



TWO HOOTS GLAMPING SITE

Sutton Wood Lane,
Bighton, SO24 9SG
two-hoots-glamping-site.
business.site

THE BRICK HOUSE

Cheriton, SO24 0PR
brickhousecheriton.co.uk

WATERCRESS LODGES AND CAMPSITE

Dean Farm, Bighton Hill,
Ropley, SO24 9SQ
watercresslodges.co.uk

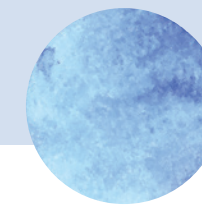


HOLDEN FARM CAMPING

Cheriton, SO24 ONX
holdenfarm.co.uk

AVINGTON PARK FARM COTTAGES

Park Farm, Avington, SO21 1BZ
avingtonholidays.co.uk



Where to shop



RITUAL

5 East Street | 01962 736 888

DELILAH BOUTIQUE

34 West Street | 01962 738 470

SUSIE WATSON DESIGNS LTD

16 West Street | 01962 734 171

RAGAMUFFIN

2 Bakehouse Yard
01962 734 488

HAIR ART

17 East Street | 01962 736 398

DESIGN REALITIES

36 West Street | 01962 732 507

MODA ROSA

35 West Street | 01962 733 277

BILLY GOAT

11 East Street | 01962 733 926

SOLE BUTCHERS

5 Broad Street | 01962 735 221

THE NAKED GRAPE

20 West Street | 01962 732 002

ALRESFORD CHIROPRACTIC CLINIC

49 West Street | 07973 777 451

EDDOLLS CARPETS LTD

30 Broad Street | 01962 735 715

D&G HARDWARE

13 Broad Street | 01962 733 133

AGE UK

21A Broad Street | 01962 735 242

ALRESFORD LIBRARY

20 Broad Street

WESSEX FUNERAL SERVICES

24 The Dean | 01962 388 470

STUDIO 49

26 The Dean | 01962 738 683

ALRESFORD COSTUME HIRE

4 East Street | 01962 738 802

LOUISA SLADE JEWELLERY

Bakehouse Yard | 07747 794 619

RICHARD STEEL

58 West Street | 01962 798 789

GIBBONS SOLICITORS

3 East Street | 01962 736 926

HELLARDS ESTATE AGENTS

11 Broad Street | 01962 736 333

WILDBUNCH FLORISTS

14 West Street | 01962 735 097

C E EVANS AND SON

8 West Street | 01962 732 477

ALRESFORD BEAUTY

24A West Street
01962 735 553

HARTOG DENTAL

4 Pound Hill | 01962 733 580

THE CO-OP

47 West Street | 01962 733 078

OAKLEAF STATIONERY

56 West Street | 01962 736 116

ALRESFORD HEARING STUDIO

42 West Street | 01962 790 749

ROXTONS

43 West Street | 01962 736 162

LONG BARN

The Old Sheep Fair,
Bishops Sutton Rd
01962 738 684

D BARKER AND SONS

40A West Street
01962 732 200

JUST BECAUSE AND DAISIES HAMPSHIRE

40 West Street

MY DENTIST

38 West Street | 01962 733 173

RAWLINGS OPTICIANS

Bay Tree House | 26 West Street
01962 734 744

NEW ERA TRAVEL

22 West Street | 01962 396 100

ALRESFORD HAIRCARE

18 West Street | 01962 733 100

SIX WEST

6 West Street | 01962 734 075

THE ALRESFORD GIFT SHOP

10 West Street | 01962 732 192

WAGGLESWORTH

4 West Street | 07522 728 195

WESSEX PHARMACIES

5 Broad Street | 01962 732 445

ALRESFORD LINEN

7-9 Broad Street
01962 734 221

LAURENCE OXLEY

17 Broad Street
01962 732 998

ALRESFORD BUILDERS MERCHANTS

18 The George Yard
01962 734 202

HOUSE OF GALLEY

19 Broad Street
01962 735 362

FOWLER AND SMITH

30 Broad Street

TESCO EXPRESS

14 Broad Street
03450 269 385

THE TOY BOX

4 Broad Street | 01962 736 045

ASH TURKISH BARBERS

1 East Street | 01962 807 574

PRADO

3 East Street | 01962 734 727

MATHESON OPTOMETRISTS

3 West Street
01962 732 336

NATIONWIDE BUILDING SOCIETY

5 West Street
03452 661 296

LLOYDS BANK

9 West Street | 03456 021 997

CHARTERS ESTATE AGENT

17 West Street | 01962 734 633

HANDMADE RUGS

19-21 West Street
01962 734 504

INTERIOR STYLE

29 West Street | 01962 736 311

HÊTRE

39 West Street | 01962 733 312



Attractions further afield

Hattingley Valley Wines

Wield Yard | Lower Wield | SO24 9AJ

Simon Robinson founded Hattingley in 2008 planting 25 acres of vineyards on chalky, south sloping fields. An eco-friendly, state-of-the-art winery was built in time for its first vintage in 2010. With over 100 awards and three 'World Champion' trophies to date, they are one of the most respected producers of English sparkling wines in the country. Visit Hattingley Valley for a tour and tasting.

Book online at hattingleyvalley.com | 01256 389 188



National Trust – Hinton Ampner

SO24 0LA | 01962 771 305

This elegant country manor and tranquil garden sit so harmoniously within the landscape that one cannot exist without the other.

The house was lovingly rebuilt by its last owner, Ralph Dutton, after a catastrophic fire in 1960. Enjoy the beautifully proportioned rooms which house his exquisite collection of ceramics and art, each window offering undisturbed views to the tranquil countryside beyond.

nationaltrust.org.uk/hinton-ampner



EVENTS AT A GLANCE

If you're looking to discover Alresford's true character, time your visit to coincide with one of its annual special events.

Highlights include:

- Watercress Festival (May)
- Grange Park Opera (June)
- Alresford Show (September)
- Christmas late night shopping, events and activities (December).

Plan your trip

GETTING TO ALRESFORD

The town of New Alresford is situated off the A31 between Winchester and Alton. Follow the brown and white tourist signs to the Watercress Line. Two hours free parking is available at Arlebury Park car park (SO24 9EP) with two further pay and display car parks in town.



BY STEAM RAILWAY 10 miles from Alton Station.
Tel: 01962 733 810 or go to watercressline.co.uk for running times.



BY BUS Regular services from Winchester, Southampton, Alton and Petersfield. Tel: 03451 210 190 or go to stagecoachbus.com for information. Cango (rural bus service): Tel: 08456 024 135 or visit hants.gov.uk.



Winchester City Council has a network of **ELECTRIC VEHICLE CHARGING POINTS (EVCP)s** across the district. Find the locations at winchester.gov.uk/parking/other-parking-facilities

FURTHER INFORMATION:
alresford.org | alresfordchamber.co.uk

DISCOVER MORE OF THE WINCHESTER DISTRICT

If you liked Alresford, why not explore the market towns of Wickham and Bishop's Waltham with the help of our market town maps and Discover Winchester District's Market Towns guide?

For more inspiration and to plan your trip, take a look at our destination guide which is available from Winchester Visitor Information Centre and online at visitwinchester.co.uk



Winchester Visitor Information Centre & Gift Shop

Winchester Guildhall, High Street, Winchester, SO23 9GH Tel 01962 840 500
Email tourism@winchester.gov.uk Web visitwinchester.co.uk

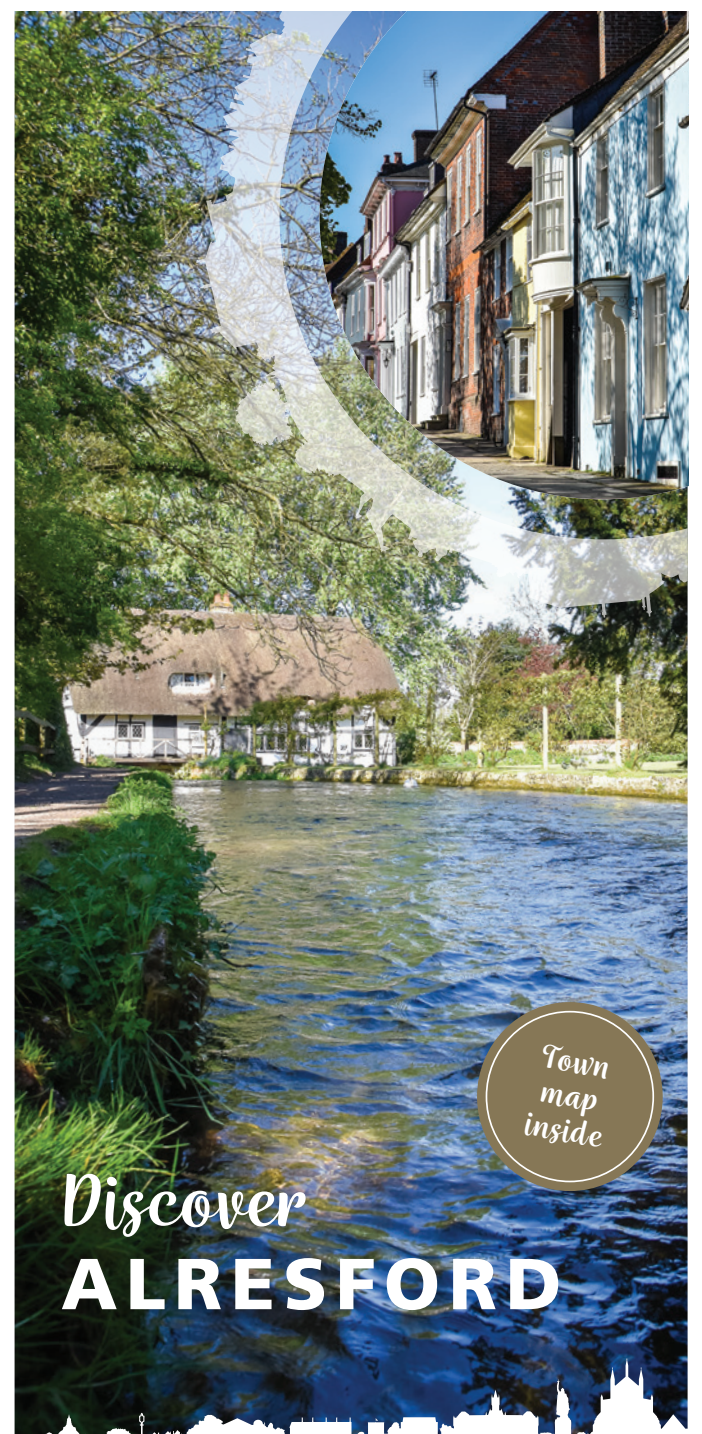
Monday to Saturday 10am to 5pm, closed between Christmas and New Year
Open Sunday 11am to 4pm May to September

[King Alf](#) [King Alf Winchester](#) [Visit Winchester](#) [King Alf Winchester](#)

If you would like this leaflet in a larger format please contact the visitor information centre.



VISIT
WINCHESTER
visitwinchester.co.uk



Town
map
inside

Discover
ALRESFORD

